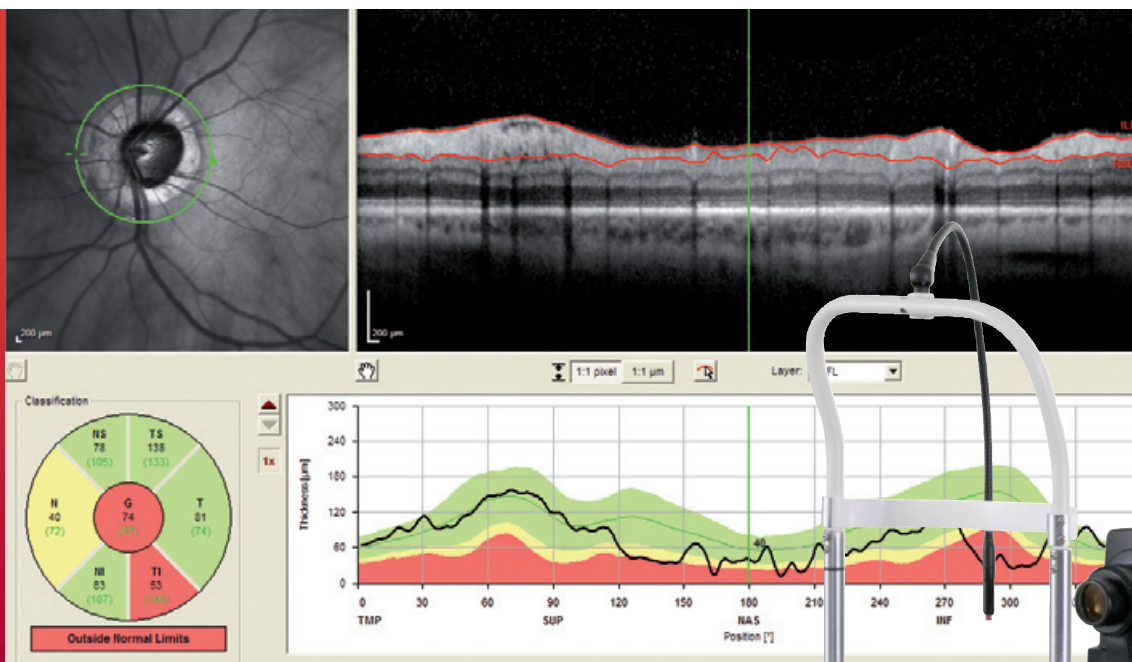


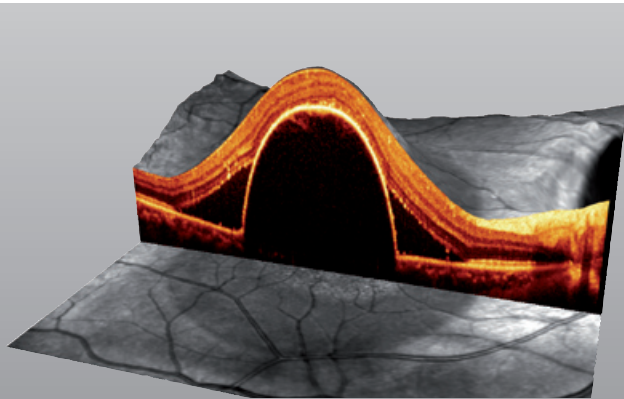


- Dual beam scanning system for simultaneous diagnostic imaging
 - Spectral-Domain OCT (SD-OCT)
 - BluePeak™ – Blue Laser Autofluorescence for metabolic mapping (optional)
 - High resolution infrared laser fundus imaging
- TruTrack™ Active Eye Tracking
- AutoRescan™ for precise follow-up exams
- Smallest measurable change of 1 µm*
- Heidelberg Noise Reduction™ technology
- Automatic Real Time (ART) image stabilization
- 40,000 A-scans per second



OCT SPECTRALIS®

Tracking Laser Tomography



SPECTRALIS OCT – multi-modality imaging. SPECTRALIS is the fusion of confocal scanning laser fundus imaging and Spectral-Domain OCT. This dual-beam system uses the fundus image to actively guide the OCT scan in real-time creating a new type of imaging modality: *Tracking Laser Tomography.*

The SPECTRALIS OCT model combines high-resolution SD-OCT with comprehensive infrared fundus imaging in an easy to use, cost effective package. The BluePeak™ enabled version adds blue laser autofluorescence to provide insight into the health of the RPE/Photoreceptor complex non-invasively without the need to inject any dye.

Technical Benefits

Multi-Modality Imaging Platform

- SD-OCT
- BluePeak™ – Blue Laser Autofluorescence*
- Infrared cSLO

Reliable OCT Scans

- 40,000 A-scans / second
- TruTrack™ Active Eye Tracking
- Simultaneous SD-OCT and cSLO imaging
- AutoRescan™

High-Contrast Diagnostic OCT Images

- Heidelberg Noise Reduction™
- Automatic Real Time (ART)
- 3.9 µm axial resolution (digital)
- 14 µm transverse resolution
- Up to 1,536 A-scans / B-scan
- Scan depth 1.9 mm

High-Quality Fundus Images

- Confocal scanning laser ophthalmoscope (cSLO)
- Simultaneous imaging
- Field of view 30°x30°
- 5 µm / 11 µm isotropic resolution (High Resolution /High Speed Mode)

Widefield Imaging

- 55° widefield lens*

*optional



**HEIDELBERG
ENGINEERING**

Headquarters
Heidelberg Engineering GmbH
Tiergartenstr. 15
69121 Heidelberg · Germany
Tel. +49 6221 6463-0 · Fax +49 6221 646362
www.HeidelbergEngineering.com

USA
Heidelberg Engineering, Inc.
1499 Poinsettia Avenue, Suite 160
Vista, CA 92081
Tel. +1 760-598-3770 · Fax +1 760-598-3060
www.HeidelbergEngineering.com