

# AUTOMATED PERIMETER AP-800

## COMPACT PERIMETER

# DELIGHT IN SIGHT

Ultimate precision and comfort.  
Easy to use.



- High reproducibility
- LED-technology
- Easy and fast operation
- Early Glaucoma detection
- Multiple illustration possibilities
- Small, compact and portable
- Reliable fixation control / digital eye tracking

 **TOMEY**  
TECHNOLOGY AND VISION

# THE TOMHEY AUTOMATED PERIMETER AP-800

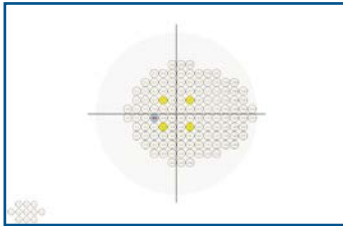


## QUALITY IN DETAIL

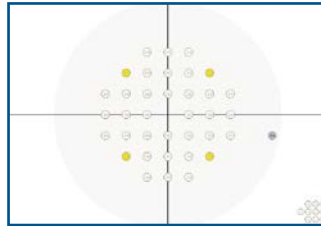
A literally 'easy-to-handle' solution for modern perimetry and screening – the **AP-800** is a compact, portable and mobile device combined with the advantage of a hemispherical perimeter. Shielded insight, electronically controlled chin rest and last but not least a structured and user optimised application software are only a few out of many other nameable points. The software operation plus features as customised menu configuration and follow-up pattern appliance make the **AP-800** an ideal working equipment.

## TEST FIELDS

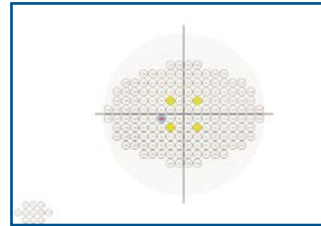
The forthcoming test fields allow an extensive Glaucoma screening besides the standard testing.



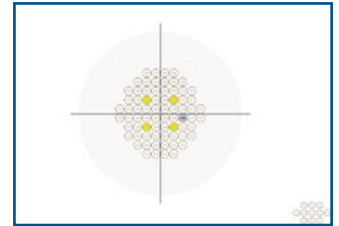
Field „Glaucoma“



Field „Macula“



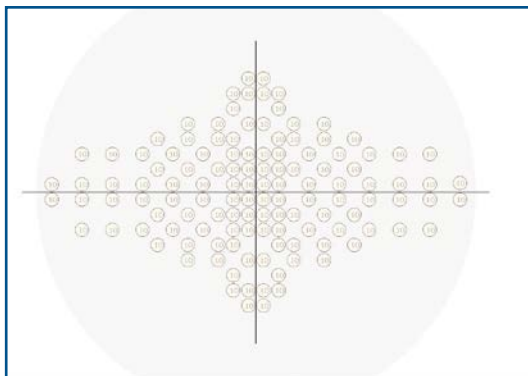
Field „Full“



Field „Central“

## TOP OF FEATURE

Even our smallest perimeter allows binocular examination.



Field „Bi-driving“



### Chin rest

Ergonomic and electronically controlled (up/down) chin rest for monocular and binocular testing.

## SPECIFICATIONS

### PERIMETER FUNCTION

<b>Stimulus bowl type</b>	Part hemispherical
<b>Bowl radius</b>	300 mm
<b>Eccentricity</b>	50° horizontal (+30° mov. fix. point) 30° vertical (+10° mov. fix. point)
<b>Background illumination</b>	10 cd/m <sup>2</sup> (32 asb), auto level control
<b>Stimulus</b>	LED, white, Goldmann III
<b>Stimulus intensity</b>	0.01 cd/m <sup>2</sup> (0.03 asb) to 333,33 cd/m <sup>2</sup> (1000 asb), 3 dB/1 dB
<b>Exposure time</b>	0.1 to 9.9 sec. adjustable
<b>Chin rest adjustment</b>	Electrically controlled
<b>Fixation control</b>	Heijl Krakau (blind spot method) and CCD camera (digital eye tracking)
<b>User interface</b>	Multilingual
<b>DIMENSIONS &amp; ELECTRIC REQUIREMENTS</b>	
<b>Dimensions WDH</b>	548 x 450 x 382 mm
<b>Weight</b>	Approx. 9 kg
<b>Input</b>	115 to 230 V
<b>Frequency</b>	50/60 Hz
<b>Power consumption</b>	Max. 60 V

2016/01 - subject to change without notice



**TOMEY EUROPE**  
TOMEY GmbH  
Am Weichselgarten 19a  
91058 Erlangen, Germany  
Phone +49 9131 777 10  
Fax +49 9131 777 1 20  
Email info@tomey.de

**TOMEY ASIA-PACIFIC**  
TOMEY CORPORATION JAPAN  
2-11-33 Noritakeshinmachi  
Nishi-ku, Nagoya 451-0051, Japan  
Phone +81 52 581 5327  
Fax +81 52 561 4735  
Email intl@tomey.co.jp

**TOMEY**  
TECHNOLOGY AND VISION

www.tomey.de