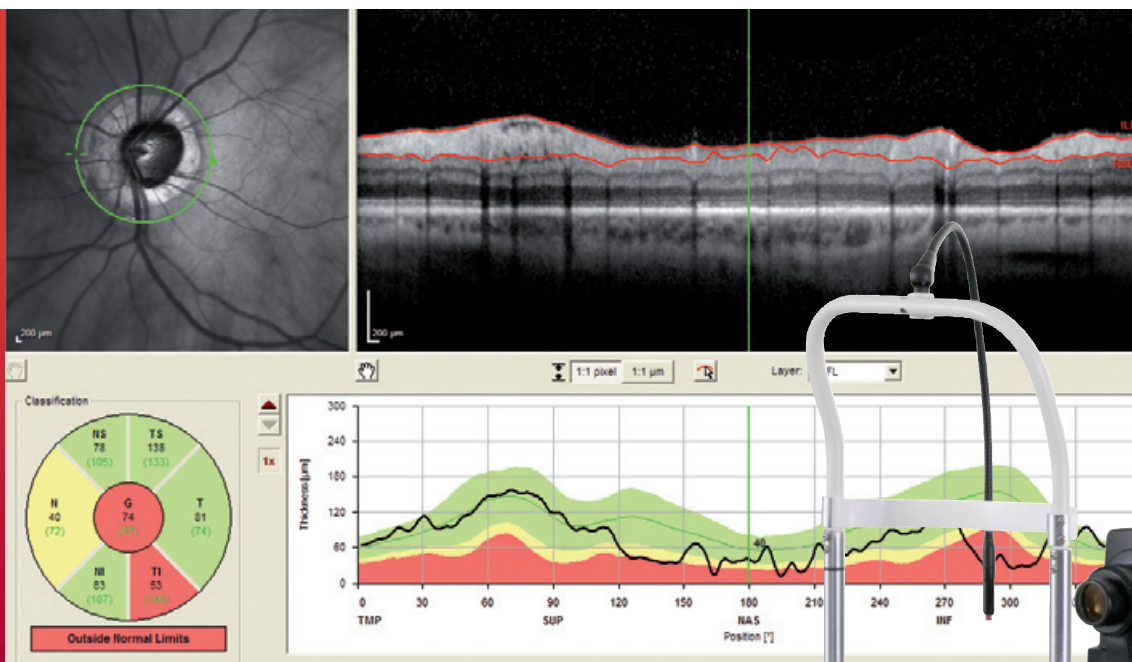


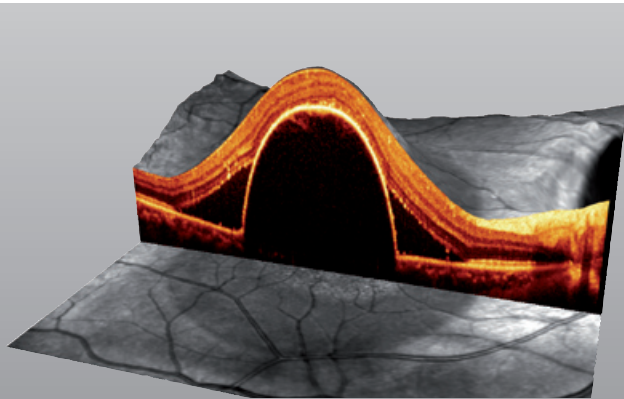


- Dual beam scanning system for simultaneous diagnostic imaging
 - Spectral-Domain OCT (SD-OCT)
 - BluePeak™ – Blue Laser Autofluorescence for metabolic mapping (optional)
 - High resolution infrared laser fundus imaging
- TruTrack™ Active Eye Tracking
- AutoRescan™ for precise follow-up exams
- Smallest measurable change of 1 µm*
- Heidelberg Noise Reduction™ technology
- Automatic Real Time (ART) image stabilization
- 40,000 A-scans per second



OCT SPECTRALIS®

Tracking Laser Tomography



SPECTRALIS OCT – multi-modality imaging. SPECTRALIS is the fusion of confocal scanning laser fundus imaging and Spectral-Domain OCT. This dual-beam system uses the fundus image to actively guide the OCT scan in real-time creating a new type of imaging modality: *Tracking Laser Tomography.*

The SPECTRALIS OCT model combines high-resolution SD-OCT with comprehensive infrared fundus imaging in an easy to use, cost effective package. The BluePeak enabled version adds blue laser autofluorescence to provide insight into the health of the RPE/Photoreceptor complex non-invasively without the need to inject any dye.

Technical Benefits

Multi-Modality Imaging Platform

- SD-OCT
- BluePeak™ – Blue Laser Autofluorescence*
- Infrared cSLO

Reliable OCT Scans

- 40,000 A-scans / second
- TruTrack™ Active Eye Tracking
- Simultaneous SD-OCT and cSLO imaging
- AutoRescan™

High-Contrast Diagnostic OCT Images

- Heidelberg Noise Reduction™
- Automatic Real Time (ART)
- 3.9 µm axial resolution (digital)
- 14 µm transverse resolution
- Up to 1,536 A-scans / B-scan
- Scan depth 1.9 mm

High-Quality Fundus Images

- Confocal scanning laser ophthalmoscope (cSLO)
- Simultaneous imaging
- Field of view 30°x30°
- 5 µm / 11 µm isotropic resolution (High Resolution /High Speed Mode)

Widefield Imaging

- 55° widefield lens*

*optional



**HEIDELBERG
ENGINEERING**

Headquarters
Heidelberg Engineering GmbH
Tiergartenstr. 15
69121 Heidelberg · Germany
Tel. +49 6221 6463-0 · Fax +49 6221 646362
www.HeidelbergEngineering.com

USA
Heidelberg Engineering, Inc.
1499 Poinsettia Avenue, Suite 160
Vista, CA 92081
Tel. +1 760-598-3770 · Fax +1 760-598-3060
www.HeidelbergEngineering.com