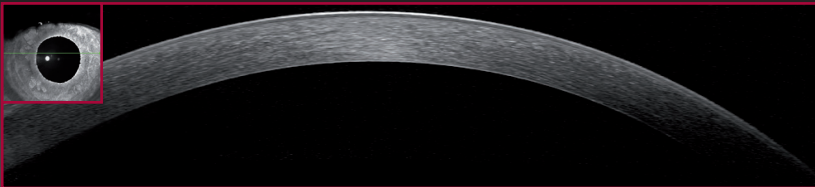


The SPECTRALIS Anterior Segment Module brings a new dimension to anterior segment imaging. It consists of an add-on lens and dedicated software. The Anterior Segment Module is compatible with all SPECTRALIS SD-OCT models.

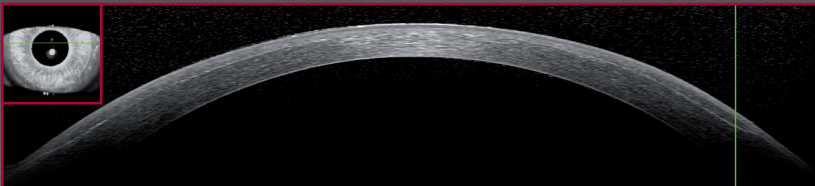
- High-resolution imaging of the Anterior Segment
- 16mm SD-OCT Scan for dual-angle imaging
- Heidelberg Noise Reduction™ for enhanced detail
- TruTrack™ Active Eye Tracking for precise image averaging
- Interactive Measurement Tools for Cornea, Sclera and Anterior Chamber Angle

The SPECTRALIS allows simultaneous cSLO (IR, Red-free, FA, ICGA) and OCT imaging, providing a detailed view of the anterior segment

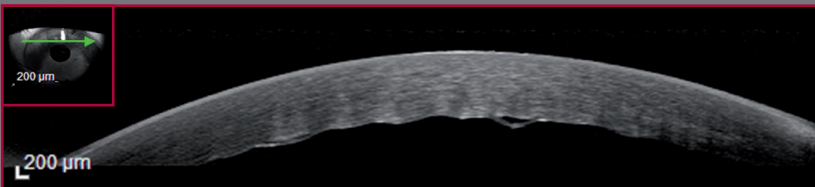
**Cornea**



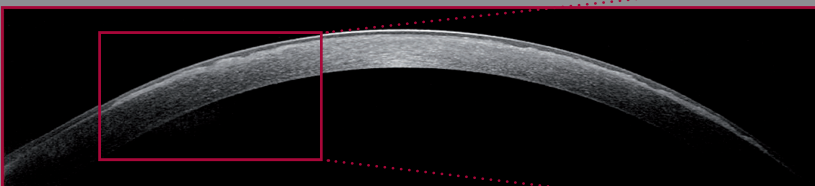
Healthy Eye



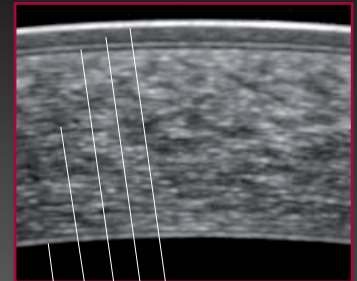
Lasik Flap



DMEK in case of Fuchs' Endothelial Dystrophy<sup>1</sup>

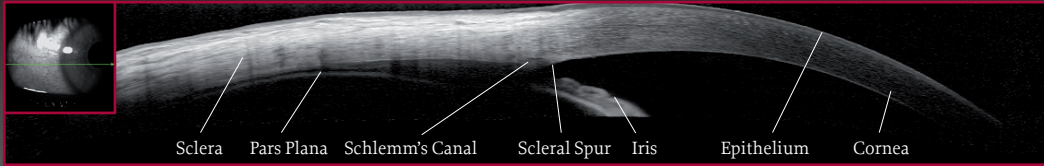


Cornea Dystrophy after PTK<sup>2</sup>

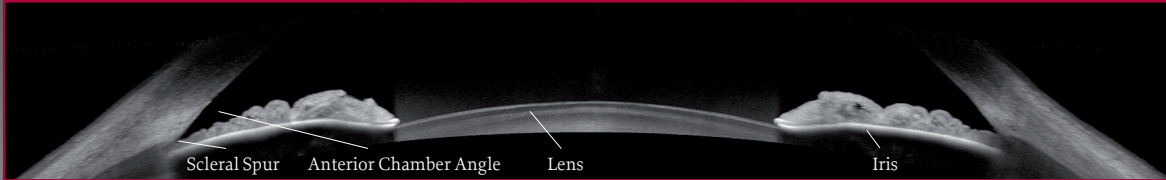


- Tear Film
- Epithelium
- Bowman's Layer
- Stroma
- Descemet's Membrane & Endothelium

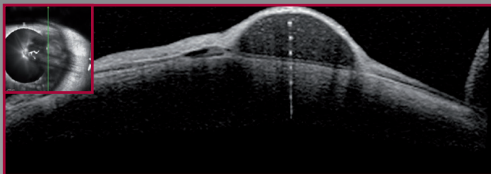
# Anterior Chamber Angle and Sclera



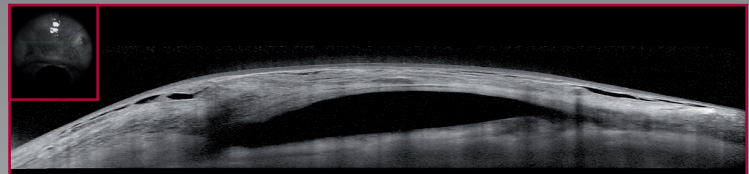
Sclera and Angle Structure



Dual-angle scan (16mm) provides a perspective of the iris and lens not visible with single-angle scans

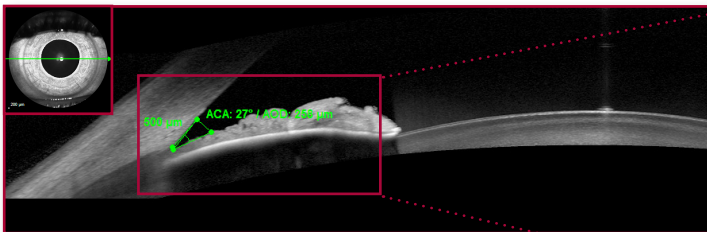


Pterygium<sup>3</sup>

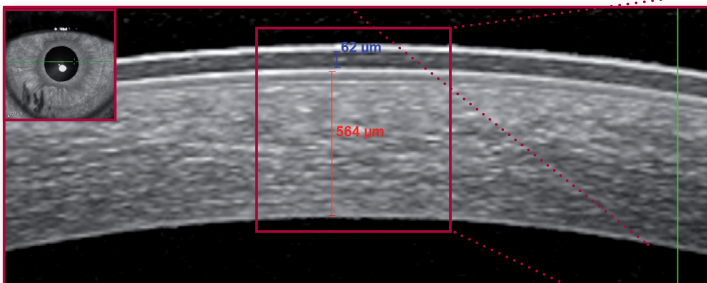
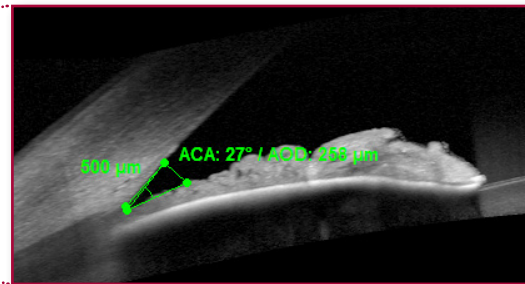


Filtering Bleb<sup>4</sup>

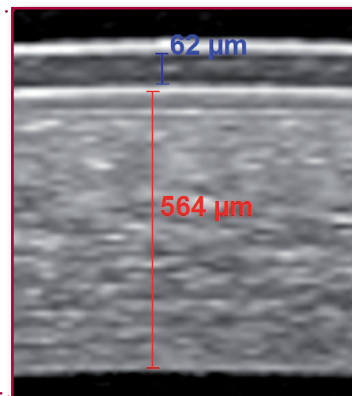
# Interactive Measurement Tools



Anterior Chamber Angle Measurements



Interactive Measurement Tools for Cornea, Sclera and Anterior Chamber Angle



Multi-line raster scan and printout also available.

Image Courtesy:

<sup>1,3</sup> Prof. Dr. F. E. Kruse, Dr. R. Tornow (University of Erlangen-Nuremberg, Ophthalmology Clinic)

<sup>2</sup> Prof. C. Baudouin (Quinze-Vingts University Clinic Paris)

<sup>4</sup> Dr. T. Theelen (Radboud University Nijmegen Medical Centre)