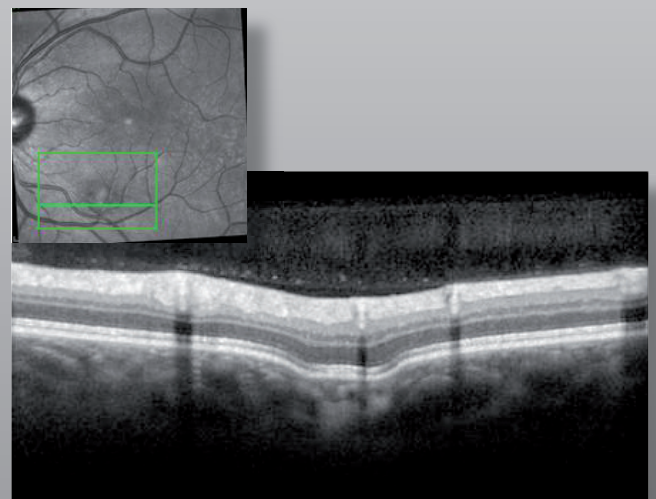
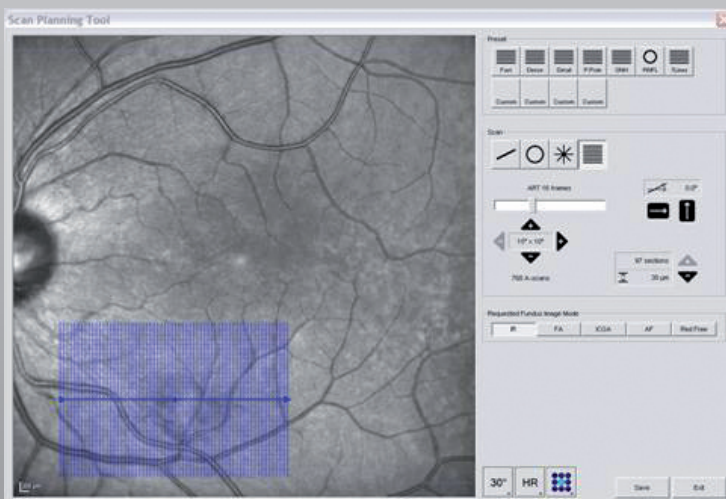


The **Scan Planning Tool (SPT)** allows to plan OCT examinations based on scanning laser fundus images* – completely independent of the SPECTRALIS® device used. Individual fundus images (e.g., IR, FA, FAF) or simultaneous images (e.g., FA + ICGA, FA + OCT) may be referenced. With the SPT software, stand alone SPECTRALIS HRA and SPECTRALIS OCT devices work together like a combined SPECTRALIS HRA+OCT system.

The SPT ensures that OCT scans are taken at the exact predefined position of the retina during follow-up examinations. TruTrack™ – Active Eye Tracking enables the AutoRescan™ function of the SPECTRALIS product family to deliver precise and reliable diagnostic information.

Optimizing and Delegating Workflows

- The SPT separates the imaging process from the diagnostic analysis (in terms of staff, space and time)
 - ➔ OCT image acquisition can be safely delegated from the doctor to an assistant
- The SPT allows to plan follow-up exams right during the initial diagnostic assessment
 - ➔ OCT examinations can be planned in a targeted manner
- The SPT supplements fundus images* with OCT scans in a targeted way
 - ➔ Full diagnosis in case of complex retina disorders



SPT – planning of OCT examinations



SPECTRALIS – acquisition of OCT scans

Efficient Planning Tool for Doctors' Offices and Hospitals

Single unit solution

Multiple unit solution



Examination room

Baseline examination

Technician, assistant



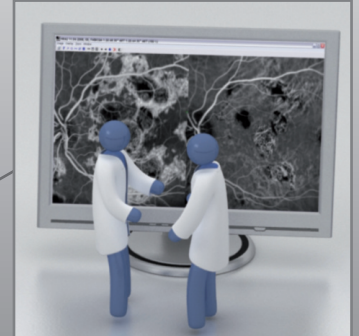
Examination room 1



Diagnostic analysis room

Diagnostic Analysis

Doctor



Diagnostic analysis room



Diagnostic analysis room

Scan Planning Tool

Doctor

OCT examination planning
based on fundus images



Diagnostic analysis room

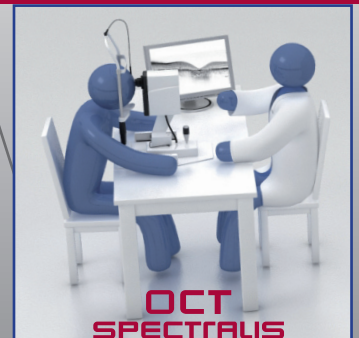


Examination room

Follow-up examination

Technician, assistant

Automatic image acquisition
of OCT scans



Examination room 2

In daily clinical practice it is often beneficial to separate imaging from subsequent interpretation of results in terms of time, location and personnel. Fundus images and OCT scans may be taken by a trained assistant or photographer whereas the diagnostic interpretation is left to an experienced clinical specialist. Such a split of responsibilities requires closely interconnected and seamlessly integrated workflows.

The Scan Planning Tool (SPT) is a specialized software geared to support complex clinical processes. The SPT allows integration of HRA and OCT models of the SPECTRALIS product line in a highly flexible and efficiently integrated workflow. Existing resources can be used most effectively with SPECTRALIS and SPT.

**HEIDELBERG
ENGINEERING**

Headquarters
Heidelberg Engineering GmbH
Tiergartenstr. 15
69121 Heidelberg · Germany
Tel. +49 6221 6463-0 · Fax +49 6221 646362
www.HeidelbergEngineering.com

USA
Heidelberg Engineering, Inc.
1499 Poinsettia Avenue, Suite 160
Vista, CA 92081
Tel. +1 760-598-3770 · Fax +1 760-598-3060
www.HeidelbergEngineering.com